

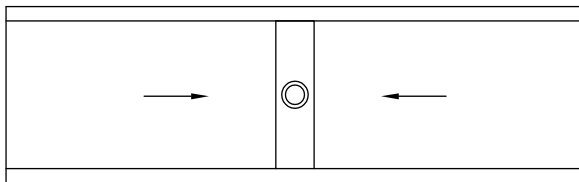
GRANIT DESIGN COLLECTION

DUAL

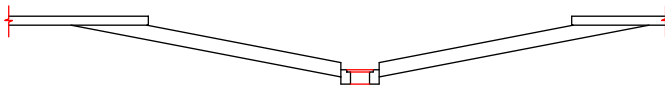


General Information

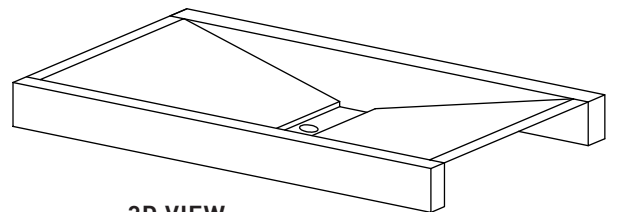
- All of our custom-made sinks are assembled using a tongue & groove technique
- Our collection comes with a Lifetime Guarantee against leaks
- We offer single, double, or triple bowl models, which all use standard drain systems
- Drainboards are always a nice addition to think about



TOP VIEW



SIDE VIEW



3D VIEW

Suggested Dimensions :
42 in x 12 1/4 in x 5 in