

choosing the right sink

Photo: Granite Design

THE IMPORTANCE OF AN EDUCATED CHOICE

The sink is an important part of any concept. The size, positioning, accessories, available space, there are all factors that will guide the customer towards a choice that will suit their needs.

AVAILABLE SPACE	
Cabinet Width	Maximum Sink Width
24 in.	21 in.
27 in.	24 in.
30 in.	27 in.
33 in.	30 in.
36 in.	33 in.

One bowl or two?

Typically, a single bowl is ideal for cozy spaces. However, there are oversized single bowls that are just as practical as a double bowl, choose something that you will like!

MATERIAL	
Type	Description
Stainless	Simple to install & maintain; Antibacterial; May require special cleaners.
Custom Made Stone Sinks	Elegant, resistant & can be repaired; As resistant to scratches as a countertop; Cabinet must be able to withstand the weight; Require same type of care as countertops; Lifetime warranty against leaks.

INSTALLATION TYPE	
Type	Description
Undermount	Applied under the countertop; No visible border; Easy maintenance. Must be left in place 24h before connecting the plumbing (under customer's responsibility).
Drop In	Visible border; Plumbing can be connected right after installation (under customer's responsibility). Silicone bead can be added (under customer's responsibility).
Apron	Bowl with visible facing; Must be in the cabinet at template, but not permanently fixed.



MINIMUM CLEARANCE

at the front of the sink	at the back of the sink	at the back of the faucet hole
3.5 in.	5 3/4 in.	2 1/2 in.*

* remember to consider the backsplash thickness into the calculations!

IMPORTANT

Undermount sinks are installed by **GRANITEDESIGN** using a high-performance adhesive, and the adhesive performance is guaranteed for 1 year following installation. The technician will **NOT** reconnect plumbing, especially with undermount sinks as **the adhesive requires 24 hours to fully cure.**



STAINLESS STEEL SINKS

Your pots and pans are no match for the durability of our sinks! Our collection offers high quality, durable models in different sizes, providing an option for every space.

Model availability can vary, validate with our team prior to ordering!

- ✔ Small single bowl models are ideal for intimate design layouts, bar areas or prep stations
- ✔ Single bowl models are ideal for smaller, more efficient spaces
- ✔ Double bowl models are best integrated in larger spaces

Locate our sink models and specs on our website!



MSI STAINLESS STEEL SINKS



18
GAUGE

18G-1210

Ext. Dim.: 14-15/16" x 12-5/8"
Int. Dim.: 12-15/16" x 10-5/8"
Bowl Depth: 7"
Strainer included.



18
GAUGE

18G-1618

Ext. Dim.: 18" x 16"
Int. Dim.: 16" x 14"
Bowl Depth: 8"
Optional sink grid available.
Strainer included.



18
GAUGE

18G-2318

Ext. Dim.: 23-3/8" x 17-3/4"
Int. Dim.: 21-3/8" x 15-3/4"
Bowl Depth: 8"
Optional sink grid available.
Strainer included.



18
GAUGE

18G-2321

Ext. Dim.: 23-1/4" x 21"
Int. Dim.: 21-3/4" x 19"
Bowl Depth: 8"
Optional sink grid available.
Strainer included.



18
GAUGE

18G-3018

Ext. Dim.: 29-7/8" x 18-1/16"
Int. Dim.: 27-7/8" x 15-15/16"
Bowl Depth: 8"
Optional sink grid available.
Strainer included.



16
GAUGE

16G-3219

Ext. Dim.: 32" x 19"
Int. Dim.: 30" x 17"
Bowl Depth: 10"
Sink grid included
Strainer included.



18
GAUGE

18G-40/60-3120

Ext. Dim.: 30-3/4" x 19-1/2"
Int. Dim.: 23-7/8" x 17"
Bowl Depth: 7-1/2" (L) & 9" (R)
Optional sink grid available.
One Strainer included.



18
GAUGE

18G-40/60-3120S

Ext. Dim.: 31-1/2" x 20-1/2"
Int. Dim.: 29.18" x 18.08"
Bowl Depth: 7"(L) & 9" (R)
Optional sink grid available.
One Strainers included.



18
GAUGE

18G-3118

Ext. Dim.: 32-1/4" x 18-1/2"
Int. Dim.: 29-15/16" x 16-1/2"
Bowl Depth: 8"
Optional sink grid available.
One Strainer included.



18
GAUGE

18G-60/40-3120

Ext. Dim.: 30-3/4" x 19-1/2"
Int. Dim.: 28-3/8" x 17"
Bowl Depth: 9" (L) & 7" (R)
Optional sink grid available.
One Strainer included.



18
GAUGE

18G-60/40-3120S

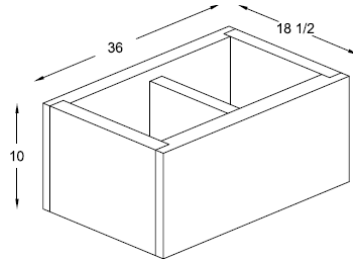
Ext. Dim.: 31-1/2" x 20-1/2"
Int. Dim.: 29.18" x 18.08"
Bowl Depth: 9" (L) & 7" (R)
Optional sink grid available.
One Strainer included.



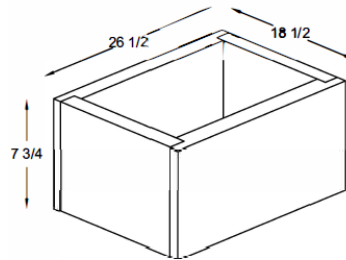
CUSTOM-MADE STONE KITCHEN SINKS

Fabricated in natural stones, mineral or ultra-compact surfaces, our sinks are built by artisans using the tongue & groove technique to the desired dimensions.

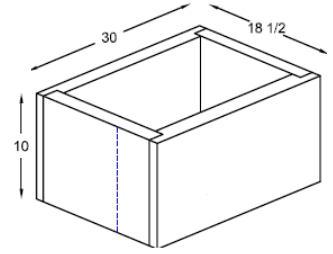
**NEW ENGLAND
#MM1002**



**BOSTON WILLIAM
#MM1000**



**CHICAGO
#MM1003**



INTEGRITY SINKS

Fabricated in mineral surfaces, these sinks offer all the same advantages that have made Cosentino's Silestone surface a worldwide leader; creating a durable and easy-to-maintain sink.

This option allows us to create a seamless look that is easy to install. The Integrity sinks are available in different colors and in three sizes :

**DUE (S)
#MM1017**



14.56 x 13.38 x 5.9 in.
37 x 34 x 15.5 cm

**DUE (L)
#MM1018**



14.56 x 20 x 5.9 in.
37 x 51 x 15.5 cm

**DUE (XL)
#MM1019**



16.93 x 26.378 x 8.27 in.
43.5 x 67 x 21 cm



Locate our sink models and specs on our website!



upgrade your design with a vanity

Offering your customers the opportunity to maximize material by adding, along with a kitchen project, a vanity, shelf, table top, etc. is often cost-advantageous.

You have a small project, and are flexible on the stone selection? Contact us and ask about our best offers!

Photo : © Cosentino, Dekton® Danae

WHITE PORCELAIN VANITY SINKS



UOV 1512

Ext. Dim.: 14 1/2" x 17 3/8"
Int. Dim.: 14 1/2" x 11 5/8"
Depth: 6 1/4"

UOV 1714

Ext. Dim.: 19-5/8" x 15 3/4"
Int. Dim.: 17 3/8" x 14 1/8"
Depth: 6-1/4"



UOV 1813

Ext. Dim.: 18 1/2" x 13 13/4"
Int. Dim.: 15 1/2" x 11 1/4"
Depth: 6-1/4"

UOV 2015

Ext. Dim.: 20 3/8" x 15 1/8"
Int. Dim.: 17-3/4" x 12-3/8"
Depth : 6"

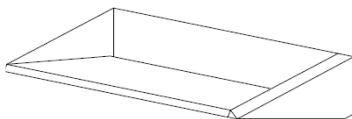
CUSTOM-MADE STONE VANITY SINKS

Whether it be natural stones, mineral or ultra-compact surfaces, each vanity sink is built by our artisans and assembled with great care to provide a high-quality product.

ARMONY #MM1020

FEASIBLE IN 1 1/4-IN (3CM) & 3/4-IN (2CM) MATERIAL

✓ QUARTZ ✓ NATURAL STONE ✓ DEKTON



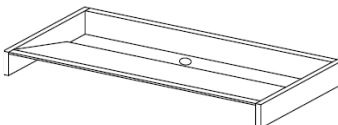
Suggested dimensions:

30 in. x 12 in. x 7 in.
(76.2 cm x 30.48 cm x 17.8cm)

FONDO #MM1015

FEASIBLE IN 1 1/4-IN (3CM) & 3/4-IN (2CM) MATERIAL

✓ QUARTZ ✓ NATURAL STONE ✓ DEKTON



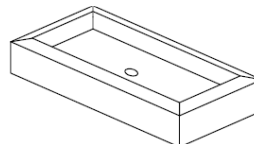
Suggested dimensions:

42.25 in. x 9.75 in. x 5 in.
(107.32 cm x 24.77 cm x 12.7 cm)

PLAZA #MM1010*

FEASIBLE IN 1 1/4-IN (3CM) & 3/4-IN (2CM) MATERIAL

✓ QUARTZ ✓ NATURAL STONE ✗ DEKTON



Suggested dimensions:

24 3/8 in. x 12 in. x 4 in.
(61.91 cm x 30.48 cm x 10.16 cm)

* models : #MM1010 - basin
#MM1010 - integrated
#MM1010 - undermount

Our custom-made sinks have a lifetime warranty against leaks.



Dekton® Bergen
Measure, fabrication & Install - Granite Design



Our custom-made vanity sinks are quoted with our pop-up drain kit BS-03. If the customer wishes to use his own model, simply inform our team and ensure the desired model is on-site at template.